



FILMTEC Membranes System Operation: Initial Start-Up

Start-Up Sequence

Proper start-up of reverse osmosis (RO) and nanofiltration (NF) water treatment systems is essential to prepare the membranes for operating service and to prevent membrane damage due to excessive pressure/flow or hydraulic shock. Following the proper start-up sequence also helps ensure that system operating parameters conform to design conditions so that water quality and productivity goals can be achieved. Measurement of initial system performance is an important part of the start-up process. Documented results of this evaluation serve as benchmarks against which ongoing system operating performance can be measured.

Following is the recommended RO system start up sequence:

Typical Start-Up Sequence

- a. Before initiating the start-up sequence, thoroughly rinse the pretreatment section to flush out debris and other contaminants *without* letting the feed enter the elements. Follow the Pre-Start-up check described in [Pre-Start-up Check and Commissioning Audit \(Section 5.2.2\)](#).
- b. Check all valves to ensure that settings are correct. The feed pressure control and concentrate control valves should be fully open.
- c. Use low pressure water at a low flow rate to flush the air out of the elements and pressure vessels. Flush at a gauge pressure of 30 to 60 psi (0.2 - 0.4 MPa). All permeate and concentrate flows should be directed to an appropriate waste collection drain during flushing.

Air remaining in the elements and/or in the pressure vessels may lead to excessive forces on the element in flow direction or in radial direction and causing fiberglass shell cracking, if the feed pressure is ramped up too quickly (see also, [High Pressure Drop, Section 8.5.3](#)).

- d. During the flushing operation, check all pipe connections and valves for leaks. Tighten connections where necessary.
- e. After the system has been flushed for a minimum of 30 minutes, close the feed pressure control valve.
- f. Ensure that the concentrate control valve is open.

Starting against a closed or almost closed concentrate valve could cause the recovery to be exceeded which may lead to scaling.

- g. Slowly crack open the feed pressure control valve (feed pressure should be less than 60 psi/0.4 MPa).
- h. Start the high pressure pump.

Start-Up Sequence

(cont.)

- i. Slowly open the feed pressure control valve, increasing the feed pressure and feed flow rate to the membrane elements until the design concentrate flow is reached. The feed pressure increase to the elements should be less than 10 psi (0.07 MPa) per second to achieve a soft start. Continue to send all permeate and concentrate flows to an appropriate waste collection drain.

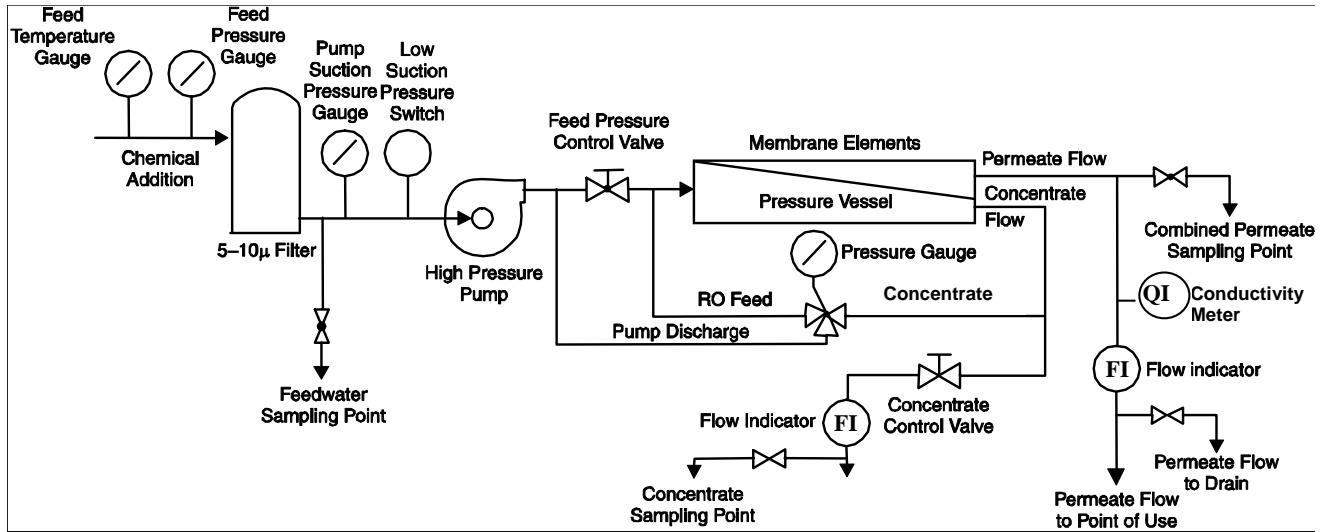
If the feed pressure and/or the feed flow rate are ramped up too quickly, the housing of the elements may be damaged by excessive forces in flow direction and/or in radial direction - especially if air is in the system - leading to telescoping and/or fiberglass shell cracking (see, [High Pressure Drop, Section 8.5.3](#)).

- j. Slowly close the concentrate control valve until the ratio of permeate flow to concentrate flow approaches, but does not exceed, the design ratio (recovery). Continue to check the system pressure to ensure that it does not exceed the upper design limit.
- k. Repeat steps "i" and "j" until the design permeate and concentrate flows are obtained.
- l. Calculate the system recovery and compare it to the system's design value.
- m. Check the addition of pretreatment chemicals (acid, scale inhibitor and sodium metabisulfite if used). Measure feedwater pH.
- n. Check the Langelier Saturation Index (LSI) or the Stiff & Davis Stability Index (S&DSI) of the concentrate by measuring pH, conductivity, calcium hardness, and alkalinity levels and then making the necessary calculations.
- o. Allow the system to run for one hour.
- p. Take the first reading of all operating parameters.
- q. Check the permeate conductivity from each pressure vessel to verify that all vessels conform to performance expectations (e.g., vessels with leaking o-rings or other evidence of malfunction to be identified for corrective action).
- r. After 24 to 48 hours of operation, review all recorded plant operating data such as feed pressure, differential pressure, temperature, flows, recovery and conductivity readings (please refer to [Record Keeping, Section 5.6](#)). At the same time draw samples of feedwater, concentrate and permeate for analysis of constituents.
- s. Compare system performance to design values.
- t. Confirm proper operation of mechanical and instrumental safety devices.
- u. Switch the permeate flow from drain to the normal service position.
- v. Lock the system into automatic operation.
- w. Use the initial system performance information obtained in steps "p" through "r" as a reference for evaluating future system performance. Measure system performance regularly during the first week of operation to ensure proper performance during this critical initial stage.

Start-Up Sequence

(cont.)

Figure 1. Typical RO/NF system



FILMTEC™ Membranes

For more information about FILMTEC membranes, call the Dow Water Solutions business:

North America: 1-800-447-4369
 Latin America: (+55) 11-5188-9222
 Europe: (+32) 3-450-2240
 Pacific: +60 3 7958 3392
 Japan: +813 5460 2100
 China: +86 21 2301 9000

<http://www.dowwatersolutions.com>

Notice: The use of this product in and of itself does not necessarily guarantee the removal of cysts and pathogens from water. Effective cyst and pathogen reduction is dependent on the complete system design and on the operation and maintenance of the system.

Notice: No freedom from any patent owned by Seller or others is to be inferred. Because use conditions and applicable laws may differ from one location to another and may change with time, Customer is responsible for determining whether products and the information in this document are appropriate for Customer's use and for ensuring that Customer's workplace and disposal practices are in compliance with applicable laws and other governmental enactments. Seller assumes no obligation or liability for the information in this document. NO WARRANTIES ARE GIVEN EXCEPT FOR ANY LIMITED PERFORMANCE WARRANTY SET FORTH HEREIN; ALL IMPLIED WARRANTIES OF MERCHANTABILITY OR FITNESS FOR A PARTICULAR PURPOSE ARE EXPRESSLY EXCLUDED.